

Travel Guide of Scenic Byway Kyushu

Q-2 Nippo Seashore Road



Saeki City (Oita Pref.) and Nobeoka City (Miyazaki Pref.) — **Rias-like coastal geography, Japan's fishery village and fishing experience** —

The area along the rias coast between Nobeoka City and Saeki City is a scenic region of the Nippo Seashore Road, located on the boundary between Oita and Miyazaki prefectures. The Main route of this scenic road is National Route 388, which follows the Higashi (East) Kyushu Expressway.

As shown in the map, both roads are parallel to each other, but intersect at some places. Therefore, you can quickly access landscape site via the expressway interchange. You can easily plan

different types of short-term trips, such as part of a route or individual recreation spots in the area.

By the way, the coastline of a scenic area consists of a series of complex terrains of bays and peninsulas. This is due to the formation of geological strata, and the cause can be understood as follows.

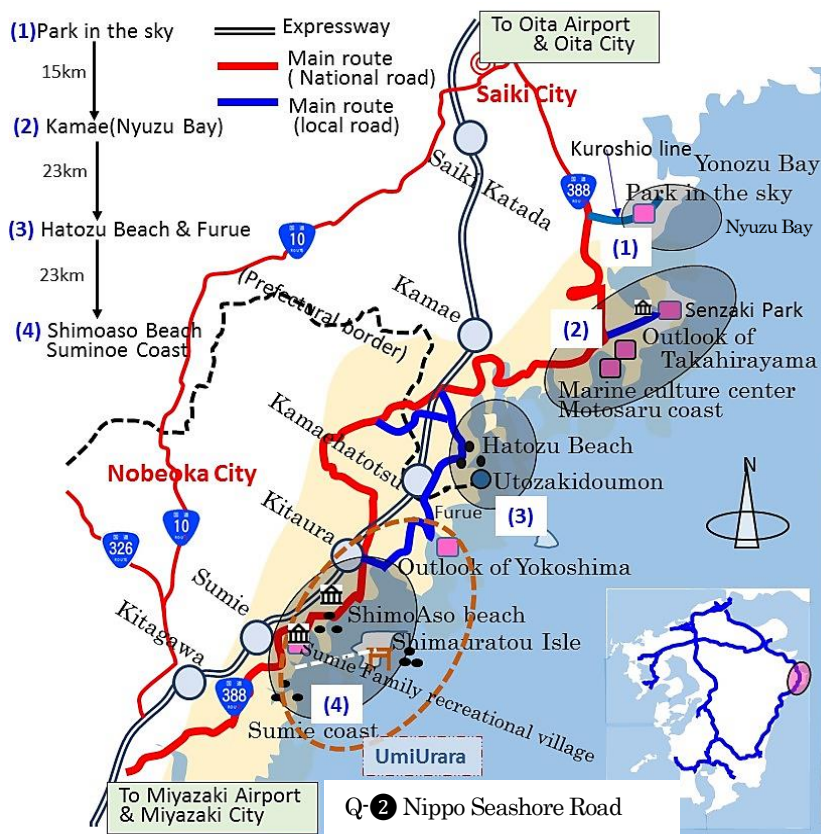
On the Kyushu Island, a geological structure line runs diagonally from Saeki Bay on the east coast to the Yatsushiro Sea on the west coast, and there is a wedge of the stratum called the north Shimanto Belt.

That is, when the ocean plate sinks below the continental plate, the sediment on the surface of the oceanic plate is scraped off and added to the continental plate. This complex is a wedge-shaped terrain, is not very high in elevation, and has many valleys. On the other hand, the complex coastline is sandy beaches formed by small estuaries and alluvium deposits.

As a result, a lot of raised areas called "nose" or "cape" were formed on the sea side. Therefore, if stopping at various observation sites on the hill, you can enjoy a drive while seeing a panoramic view, while you can play many beautiful beaches at the sea side.

(Access.) The access points to the Nippo seashore route are Oita Airport, Miyazaki Airport, and both stations of Saeki and Nobeoka on the Nippo main line of JR Kyushu. However, the distance from Oita Airport to the center of Saeki City is 113 km on the expressway, and it takes about 1 hour 30 minutes. On the other hand, the distance from Miyazaki Airport to the center of Nobeoka City is about 110 km. As a result, access to this area from those airports is not good, but it depends on your discretion and may be more interesting journey.

If you think the access is far from Oita Airport, we recommend you to stop at a city such as Beppu or Oita. On the way from Miyazaki Airport, you can enjoy the center of Miyazaki City or Nobeoka City. In short, you



Nippo Coast of Eastern Kyushu



OBATYAN (auntie) Viking Buffet

can make a variety of interesting trips that contrast cities and fishing villages by adding places to visit.

(Scenic Resource). As a local scenic resource, travel in this area has three perspectives. One is **the geographical feature**. Peninsula protruding to the sea and small dented coves appear alternately, and you can see many beautiful coastal scenery included in Nippo Kaigan Quasi-National Park. The mountain ridge has many observation decks, and the scene from there is a panorama of the beautiful mountains and the waves calm sea. It is also a quiet fishing village in harmony with people's lives.

The second is **the fishing village itself**. Our country is surrounded by the sea and has various fishing villages to see. The fishing villages in this area are characterized by coastal aquaculture. You can learn the actual situation of aquaculture by the fishing ground facility of the raft using a quiet bay. In addition, at the Maritime Museum, you can learn about the history of the development of fishing gear and fishing boats for fishery on Bungo-suido Channel,

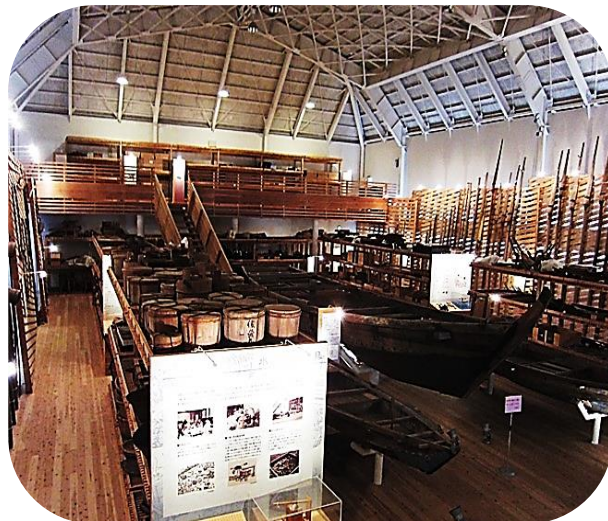
and the actual situation of coastal fisheries. In addition, you can go around to each village through the alley of the fishing village and the unique structure of the village.

The third is **various cultural activities related to the sea**. Although it is not a so-called school, it is called Amabe-Tosei College, and there are many classrooms for learning about practical sea and fish.

"Amabe" is an old Japanese word, but it means as a fisherman and fisher women. "Tosei" is used mean a way living and working. There are various learning classes at the Oita Prefectural Marine Culture Center, and practical classes are held in many places such as fishery companies and fishing villages.



(1) Park in the sky and the road named as Kuroshio Line.



(2) Museum on Fishery



(2) View of the Kawauti Bay from Mt. Takahira



(2) Fixed Floating Raft of Marine Company sticking out to Nishiura Bay



(2) Black Sand Beach of Motosaru Coast and Marine Culture Center



(2) Dusk of Motosaru Bay where Ocean Sunfish can be seen in Summer.

2015.12.01 17:24

Examples include lobster cooking, pearl core insertion, marine sports training, sand art, fish cooking class and so on. Held mainly held from summer to autumn, you can learn while enjoying the typical fishing villages of Kyushu.

In short, the three key themes of this scenic route are the rias coast, unique fishing villages and culture related to the sea.

(1) Kuroshio Line Road and Sky Park.

Enjoy the view of the sea here. Going south on National Route 388 from the central district of Saeki City, and turning left at the T-intersection on the way, you will find the wide-area agricultural road. If going along it, there is the Oura tunnel (1230m), and the road runs through the ridge of the peninsula sandwiched by Yonozu Bay and Nyuzu Bay.

The road is 250m above sea level and is called the "Bungo-Kuroshio Line". There is a sky park and an observatory deck on the way, and you can enjoy the magnificent scenery. If you go further, you reach Yonozu Bay.

Meanwhile, looking down the south, the peninsula protrudes into Nyuzu Bay, and the surrounding sea is a calm and lively fishing ground.

After returning to National Route 388, you will arrive at Ebuto Coast, and you can find a flock of Hamayu (crinum) around Ebuto Shrine where white flowers of more than 10,000 pieces bloom in summer.

(2) Kamae District of the Fishery Industry.

When heading south on National Route 388, you reach Kawau-chi Bay in the Kamae area. The coast has seven bays along the national route. The sea is rich in plankton and is a treasure trove of fish. The first place to encounter in this area is the Maritime Museum. This rare wooden building with no windows displays the fishing gear and boats once used by fishermen.

Entering the prefecture road 687 while watching the unique scenery, you may reach Senzaki Park, where azaleas are popular. In the Senzaki Park, many azaleas bloom in the middle of every April, and the azalea festival is held.

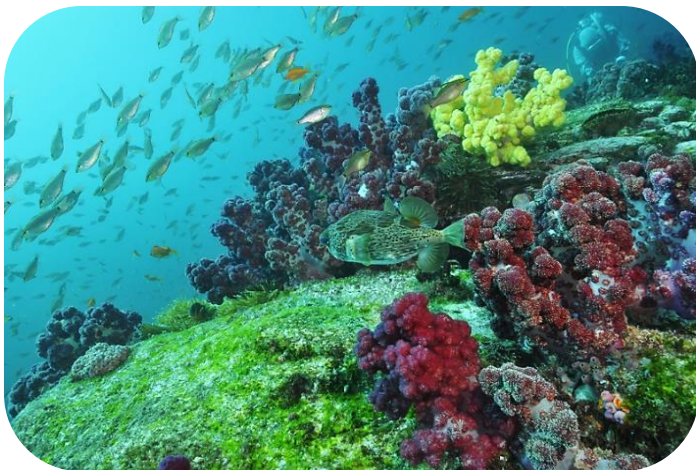
Then, there are the following contents along the route of this scenery road. Retuning to National Route 388 and heading south, you will arrive at Motosaru Bay, which is a beautiful arched beach of black sand, as shown Photo (2) on page 2. Next is Oita Prefectural Marine Cultural Center. It is a unique architectural building with an arched roof. There is a salt water pool, a planetarium, an aquarium, etc. Although not necessarily every year, sunfish captured by the fixed net will be seen from March to May.

A panorama of the bay and fishing village can be seen from the observation deck in Takahirayama Park behind the Cultural Center. The park also has a panorama of 1 million wild chrysanthemums, with lots of white and yellow flowers blooming from October to November (see photo (2) on page 4).

On the other hand, when diving or fishing, you can see coral reefs along the coastal area from Kamae Port to Fukushima Island. This seabed is the northern limit where corals can be found in Japan, so please drop in if you have time. It takes about 30 minutes by boat from Kamae Port.

(3) Hatotsu Beach in the Prefecture Border.

Hatotsu Beach is located in the southernmost part of Oita Prefecture, more than 20 km away from Kamae area. It was selected as one of the "100 Best Japanese Landscapes of White Sand and



(2) Coral Reef in Fukushima Island



(4) Shimo-Aso Beach and Museum on Salt

Aomatsu" with its beautiful white-blue contrast. The sea is shallow and the waves are quiet. A safe and comfortable beach is a great resort spot for visitors who know it.

In addition, there is a natural rock gate "Uzaki Dōmon" created by the action of the tide at the cape on the prefectural border. Unfortunately, it cannot access from the land, so please approach by charter boat.

After crossing the prefecture border along Prefectural Road 122, you can reach the central part (Furue District) of the Kitaura area in Nobeoka City. The coastal area has a tourist information center, a restaurant serving fresh fish dishes, and a roadside shop selling local specialties, where you can take a break.



(2) Oita Prefecture Marine Culture Center and Ocean Sunfish (mola mola)



(2) Chrysanthemum in Takahira Park



(3) Hatotsu Beach



(4) "Shima-no-Urashima" Island is at the Front of Shimo-Aso Beach

(4) Umi-Urara Resort Park in Nobeoka Region.

"Umi-urara Resort Park" is a coastal park that extends along the coast from the Kitaura area to the Urashiro area, and has the theme of ocean resorts and recreation. Umi-urara in Japanese means "slowly enjoying the quiet and warm sea". The basic equipment is the natural beach itself. From the north, Shimo-Aso beach, Kumano coast and Suminoe beach are lined up, and they are the beautiful sandy beaches.

In particular, Shimo-Aso Beach has high transparency and is regarded as the cleanest beach in Kyushu. In addition to the beach, there are a salt museum and a roadside station store. In addition, Suminoe Beach has a family-friendly aquarium and travel village. You can enjoy the sea while camping with your family.

Furthermore, Shimauro-Shima Island is right in front of these coasts, and you can reach it by boat in 10 to 20 minutes from Urashiro Port. It was selected as one of the "100 selections of islands in Japan" as a way to understand the activities and lifestyles of the islands and pass it on to the next generation. As you enjoy diving in the sea of the island, you will encounter beautiful coral reefs and enjoy the spectacular views of Kyushu floating in the waves of the Pacific Ocean.

Publishing and Copy right.
Promotion Conference of Kyushu Scenic Byways
(c) (Copy right 2020. All rights reserved)